

PCI, your IT Asset and Inventory Management specialist for 19 years

The SimplyAsset IT asset management software gives you increased visibility and control of your IT assets throughout their life cycle, from start to finish. SimplyAsset helps you optimize the use of your assets, reduce costs, provide better quality service, a guaranteed return on investment for your company on your IT infrastructure.



Asset Management - Network Inventory - IT Asset Administration



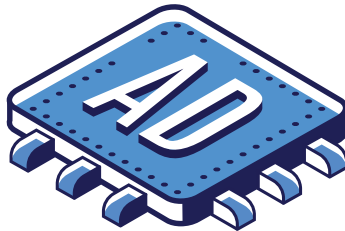
Simply
Inventory

OPTIMIZE
the management
and the
INVENTORY
OF YOUR **IT**
infrastructure

**WHEN
ASSET MANAGEMENT AND
ADMINISTRATION BECOME
CHILD'S PLAY!**



The three **SIMPLY ASSET** modules:



IT Asset Management, IT Asset Administration, PC and network devices Inventory
Available on the cloud in SAAS mode or in On-Premise mode

The Asset management, Asset Administration, PC Inventory modules and SimplyScan network devices are simple and efficient tools intended to manage the IT assets of companies of all sizes in the private and public sector. Full web SimplyAsset is available on the cloud in SAAS mode or in On-Premise mode, installed in your server infrastructure. SimplyAsset was designed for a fast and simple implementation and does not require an agent in order to scan PCs and servers.

Integrated into the Helpdesk module, it offers a unique interface and comes with all the Simplydesk software modules.

Therefore, it is possible to switch between applications in a single click to display the details of an equipment's master record or to link an intervention to an asset, making it valuable tool to boost productivity. The link between the network inventory module and the Active Directory allows automatic creation and allocation of users to their workstations (CPU, Monitor and Printer). The package distribution and network mapping modules allow you to install software remotely and visually display your network.

10 good reasons to use SimplyAsset and SimplyScan !

- ▶ Identifies and manage all types of assets
- ▶ Knows where the asset is located and who is using it
- ▶ Manages costs, warranties, contracts and tracks your equipments' movements
- ▶ Automatically detects and inventories PCs, Servers and Network devices without requiring an agent
- ▶ Manages allocation of PCs to users automatically with Active Directory
- ▶ Manages License compliance
- ▶ Deploys and updates applications
- ▶ Visual display of your network
- ▶ Allows remote access of PCs and Servers directly from the application
- ▶ Obtains relevant statistics on the configuration of your IT infrastructure



Asset Management

For the commercial, technical and financial management of your IT infrastructure



The SimplyAsset IT asset management software gives you increased visibility and control of your IT assets throughout their life cycle, from start to finish. SimplyAsset helps you optimize the use of your assets, reduce costs, provide better quality service, a guaranteed return on investment for your company on your IT infrastructure.



SimplyAsset benefits



Fast Deployment and Automated Management

SaaS mode frees you from the constraints of a technical installation. Your application can then be accessed immediately on our secure infrastructure. The link with the network inventory module allows you to automatically create PCs and Servers connected to the network. The link with the Active Directory allows you to automatically create users and allocate desktops detected by the network scan.



Personalized management of all asset types

Create, manage and classify all your equipment (Company, Site, Department and Type of equipment) with the automatic, agentless inventory module or in manual entry mode. Manage the technical and financial information with the equipment master record.



History and traceability of your equipment's movements

Manage your equipment's lifecycle from start to finish. Identify interventions performed on those assets through the Helpdesk module



Relevant statistical data

Obtain relevant information on the configuration of your IT assets using SimplyAsset's precise and clear graphical indicators.



Software management with license non-compliance

The SimplyScan module and license agreements management enables the identification of non-compliant software.



Costs and warranties management

For each equipment, manage costs, acquisition types, warranties with proactive alerts



Purchase, Stock and Budget management modules

Track your purchasing orders, manage your stocks and monitor investment and operating budgets in real time.

Inventory Management

Automatic and agentless inventory of PC,
Servers and Network Devices

The inventory module SimplyScan is the first step to successful Asset management and administration, allowing you to take advantage of a complete, reliable and up-to-date inventory of your hardware and software infrastructure around the clock.

SimplyScan benefits



Fast deployment in just a few minutes

SaaS mode frees you from the constraints of a technical installation. Your application can then be accessed immediately via our secure platform. The service (Simplybox) which allows to perform the inventory of one or several sites is installed in just a few minutes.



A multi-company and multi-network scan

In just a few minutes, install as many scanning consoles (SimplyBox) as needed for your customers or individual networks and automatically access your inventories.



Agentless scanning

SimplyScan uses agentless scanning to automatically detect installed devices, including software and hardware components on PCs, Servers and Network devices.



The Scan&Go concept

This is a concept of streamlined productivity, enabling you to use the Simplydesk software without preliminary configuration or inventory. You can automatically create users and their workstations (CPUs, Monitors, Printers).



Boost productivity and customer satisfaction

Enhanced IT service productivity: data is automatically updated without the need to travel to the various sites to perform inventory. CMDB data is consistent and reliable.

Increase your information security: it identifies any devices connected to the network and software installed on the PC.

End-user service: Customizable alerts make you more proactive (i.e. a PC with a hard drive with less than X Gb)

Environment: Reducing your electricity bill also reduces your carbon footprint proportionately.

Communication: Announce your results to your employees and customers.

IT Asset Administration+

**Package distribution, Network mapping,
Remote access, Active Directory link**

SimplyAdmin, the IT Asset Administration module, enhances your information security and helps you control, inventory and manage your IT infrastructure simply and automatically without unnecessary travel, thanks to a modular Asset administration solution.



SimplyAdmin benefits



Deployment in a just a few minutes

Saas mode frees you from the constraints of a technical installation. Your application can then be accessed immediately via our secure platform.

With SimplyBox, you can install the inventory service at one or several sites in just a few minutes.



Package Distribution

With SimplyAdmin, package distribution and patch management software, you can automate the remote installation/uninstallation of applications in your PC infrastructure. As a result, you save precious time in Asset management, enhance the security of your IT infrastructure and improve the uniformity of installed applications without the need to travel.



Network mapping and Block wiring

Network mapping software graphically displays active elements on the network with details of IP devices connected to the ports of the company's hubs, switches and routers, making it easy to obtain a graphic network display.

For each switch, block wiring displays the ports being used, the IP devices connected and the network socket number to which each IP device is connected.



Remote access

With SimplyAsset, you can use market-standard software to remotely access all PCs and servers connected to the network, increasing responsiveness and productivity by eliminating unnecessary travel.

The features

Asset Management Module

Asset management module simply asset:

- Manage all types of equipment: IT (CPU, Monitors, Printers, Network devices), Telephony, other equipment (office furniture, workshop tools) including hardware and software components (Processors, memory, Hard drives and Software).
- Manage physical locations: Simplydesk is a multi-company and multi-site software. It identifies the company that owns the equipment and displays its location.
- Manage allocation of equipment to users and departments. Who is the equipment's end user?
- Manage costs and warranties: Simplydesk allows you to manage various acquisition types (purchases, rent, leases, loans) and related costs.
- Manage contracts and warranties with the related costs, expiry dates and notice periods
- For purchased assets, calculate fixed assets, depreciation and residual values.
- Manage various types of contracts (asset contract, license contract, general contract, customer service contracts) with the costs and notice periods.
- Personalize the types of equipment: define your multi-level hierarchy tree
- Personalize the equipment master record and the fields managed in the various tabs.
- Manage and trace the history, movements and interventions of and carried out on equipment from start to finish
- Manage Asset status: you determine the status according to your needs (in stock, in use, out of service, on loan...)
- Precise management of hardware and software components (Updated by SIMPLYSCAN or manually).
- Manage non-compliant software
- Alert management: contract notice periods and detected changes between two scan sessions.
- CSV Import and Export features
- Asset management statistical analysis with export and filter features by:
 - Company, Site, Department, Type of acquisition, Warranties, Type of equipment, Age and renewal
 - Operating system, License compliance, Failure rate
 - Memory, Manufacturer, Disk space, Computer models

Purchase/stock/budget management module:

- Manage stocks of components (hard drive, memory), consumables (ink cartridges, office supplies) and licenses.
- Purchase management issuing orders, follow-up, reminders and receipts.
- Alerts when minimal stock threshold is reached.
- Budget management with automatic attribution of the realized budget compared to the planned budget

Active directory module/SSO:

- Automatic creation/modification of users in Simplydesk using Active Directory
- Single Sign-On (unique authentication system)
- Automatic allocation of PCs to users using the Inventory module

The features

Asset Management Module

Automatic inventory simply scan module:

- Automatic inventory with agentless deployment for PCs, Windows and Linux servers and network devices via the SNMP protocol
- Accurate display of installed hardware and software components
- Automatic creation of monitors and printers connected to PC
- Proactive alerts for detected changes between two scan sessions, low disk spaces or for devices that have not been scanned for a long period of time.
- Multi-network (LAN and WAN)

Package distribution module:

This module enables automatic remote software installation and patches in the IT infrastructure.

- Installation packages (MSI, EXE, BAT)
- Remote installation/uninstallation of applications
- Automation of software updates and patches
- Direct link with the Asset management and inventory modules for workstation selection

Remote access:

This feature enables remote access via SimplyDesk of PCs connected to the network through a connector with third-party applications such as Windows remote desktop and TeamViewer API

Network mapping and block wiring module

This module makes it possible to automatically create the graphical network display using the SNMP protocol:

- View the graphical network representation
- Link between switches, routers and hubs
- View of cascading hubs
- Link between ports, connected devices and network socket
- Impact in the event of network failure.

Asset Management

Quick and easy to set up and use

SimplyAsset is the product of 19 years' experience in Asset management, designed and optimized so you can start managing your IT assets in no time

Settings

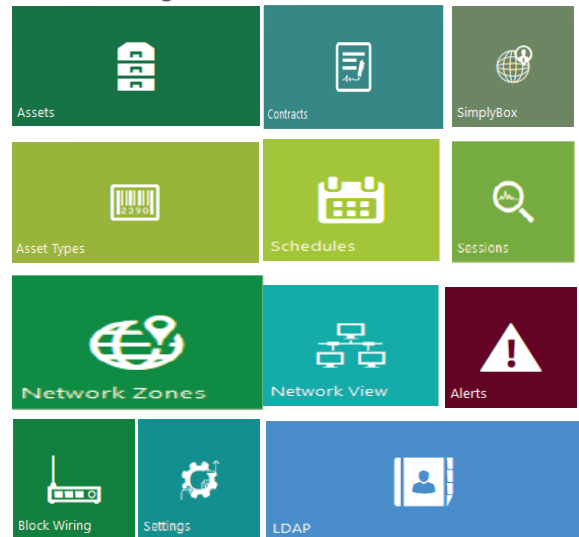
The types of equipment and attributes you want to manage are predefined for easier implementation. You can also personalize them according to your needs.

Equipment, hardware and software components are created either manually or automatically through the automatic inventory module.

List of equipment and details of an equipment master record

Equipment, hardware and software components can be filtered by lists. It should be noted that the CMDB contains warranties, hardware and software components and equipment. It is therefore possible to visualize assets attached to a company, site and department. Clicking on an equipment shows more details.

Asset management



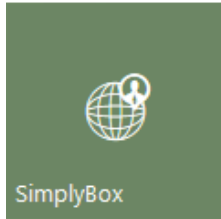
Quick Filters		Quick view					
Only unassigned assets		Advanced Search					
All assets		Company					
		Type					
		Component					
		Asset					
		IT Asset					
		Computer					
		Desktop					
		Laptop					
		Server					
		Network					
		Printer					

#	Type	Name	Asset Status	Serial Number	Manufacturer	OS	OS Product Key
DESKTOP-6	Desktop	ADMINISTRATION - 192.168.1.23	In Use	VMware-55 4d 95 ba 95 9c d7-61 c3 00 2c c5 9d e5 1d	Intel Corporation	Microsoft Windows XP Professional	M2CH-CP9DQ-2H419-2WU6-RCV1Q
DESKTOP-11	Desktop	COMPTA-DESK - 192.168.1.30	In Use	8118181	Dell Inc.	Microsoft Windows 10 Professional	V17JG-NPH7M-C37AA-9MFGT-3J58T
DESKTOP-2	Desktop	ORION - 192.168.1.56	In Use	7718181	Dell Inc.	Microsoft Windows 8.1 Professional	F4RKT-3R1QD-HG31H-R3Q1G-W1V13H
DESKTOP-3	Desktop	PEM - 192.168.1.168	In Use	9172E72C-BB10B4B72703	Acer	Microsoft Windows 8.1 Pro	5436T-02EAB-5548C-D418C-54092
DESKTOP-8	Desktop	SR1800 - 192.168.1.184	Missing	VMware-55 4d 22 5a b7 00 0f c5-58 00 79 74 5a 72 cd e5	Intel Corporation	Microsoft Windows 7 Edition Integrate	18936-2EABP-OCUP-PE666-7A079
DESKTOP-1	Desktop	TITAN - 192.168.1.61	Retired	Y516101656	Fujitsu	Microsoft Windows 10 Professional	66666-628CA-440K7-AAA4F-8C788

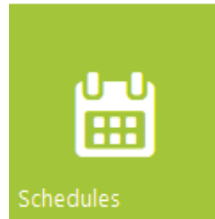
Financial	Computer	Details	Remote access
Components	Operating System Edition		
Relations	Microsoft Windows 10 Professional		
Graphical View	OS Product Key		
Software	V17JG-NPH7M-C37AA-9MFGT-3J58T		
Contracts	System		
Licenses	Last Scanned Date		
Requests	12/17/2019 09:11 PM		
Attachments	Processor		
Activities	Intel(R) Core(TM) i7-8650U CPU @ 2.50GHz		
History	Installed Memory (RAM)		
	8 GB		
	System Type		
	64 bits Operating System, x64 Processor		
	Pen and Touch		
	No Pen or Touch Input is available for this Display		
	Computer name, Domain, and Workgroup Settings		
	Computer Name		
	COMPTA-DESK		
	Domain		
	POFRANCE.FR		
	Assignment		
	Company		
	PO		

Inventory Management

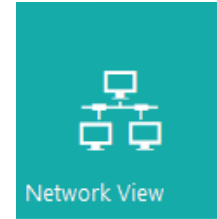
Automatically and simply scan the PCs and servers on your network



Set up the scan service in a few minutes

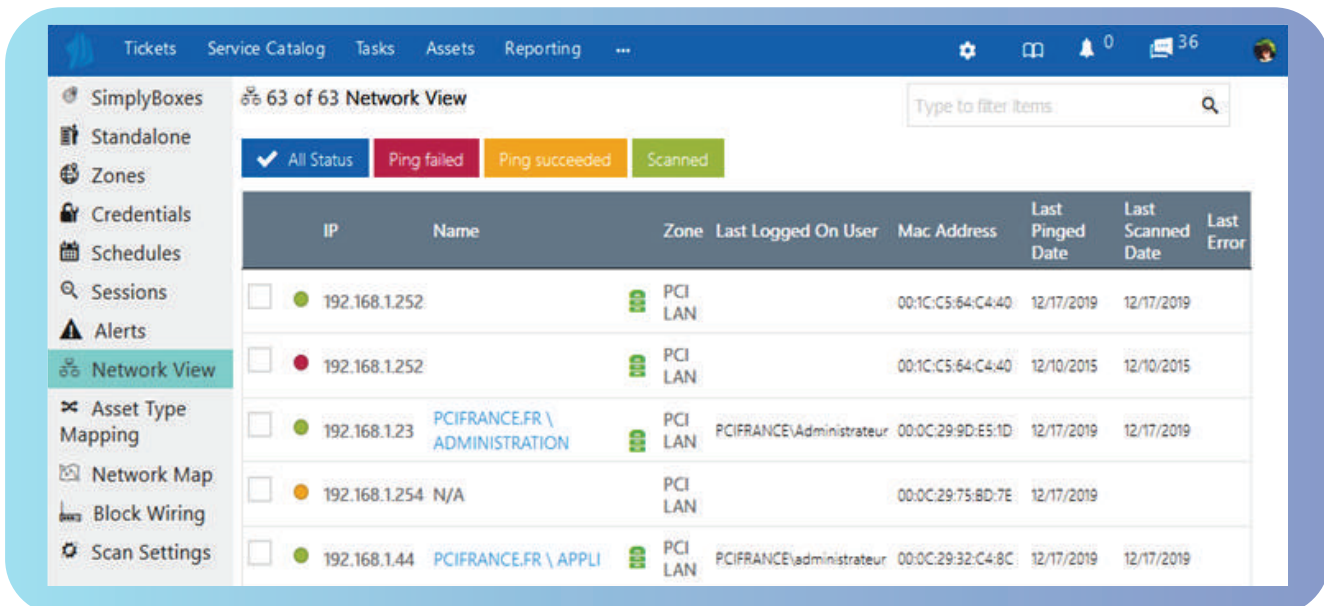


Schedule the network scan



View and manage data on scanned devices

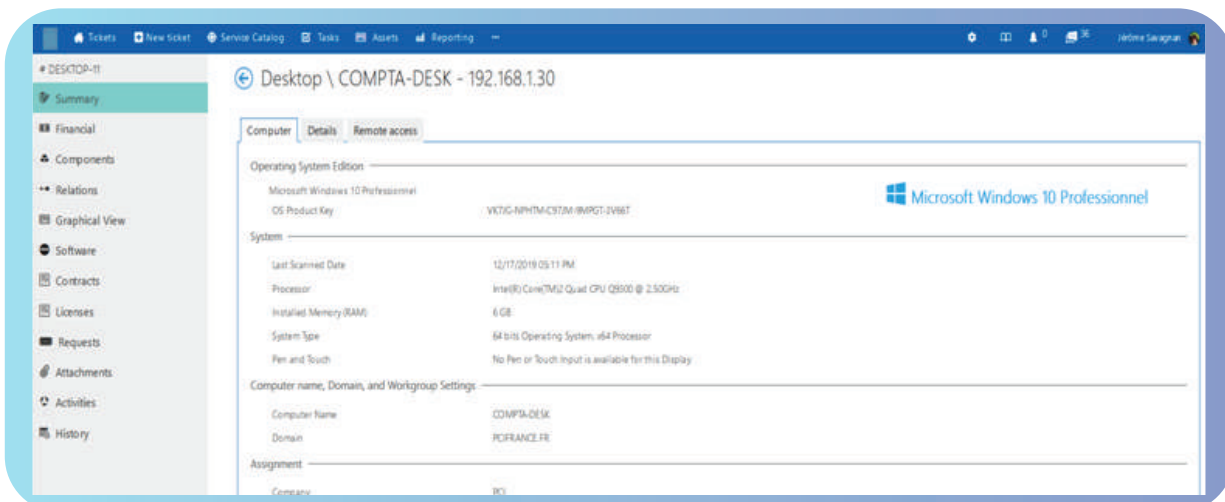
View of network and scanned workstations



The screenshot shows the 'Network View' section of the SimplyScan application. The left sidebar contains a navigation menu with options: SimplyBoxes, Standalone, Zones, Credentials, Schedules, Sessions, Alerts, Network View (selected), Asset Type Mapping, Network Map, Block Wiring, and Scan Settings. The main area displays a table of network devices. The table has columns for IP, Name, Zone, Last Logged On User, Mac Address, Last Pinged Date, Last Scanned Date, and Last Error. The table shows 63 devices in total, with the first few rows visible. The status of each device is indicated by a colored circle: green for scanned, red for ping failed, and orange for ping succeeded.

IP	Name	Zone	Last Logged On User	Mac Address	Last Pinged Date	Last Scanned Date	Last Error
192.168.1.252		PCI LAN		00:1C:C5:64:C4:40	12/17/2019	12/17/2019	
192.168.1.252		PCI LAN		00:1C:C5:64:C4:40	12/10/2015	12/10/2015	
192.168.1.23	PCIFRANCE.FR \ ADMINISTRATION	PCI LAN	PCIFRANCE\Administrateur	00:0C:29:9D:E5:1D	12/17/2019	12/17/2019	
192.168.1.254	N/A	PCI LAN		00:0C:29:75:BD:7E	12/17/2019		
192.168.1.44	PCIFRANCE.FR \ APPLI	PCI LAN	PCIFRANCE\administrateur	00:0C:29:32:C4:8C	12/17/2019	12/17/2019	

This software displays the network devices detected by the scan. A color code identifies the scanned, unscanned, connected and unconnected devices on the network.



The screenshot shows the 'Desktop View' section of the SimplyScan application. The left sidebar contains a navigation menu with options: Desktop-11, Summary (selected), Financial, Components, Relations, Graphical View, Software, Contracts, Licenses, Requests, Attachments, Activities, and History. The main area displays detailed information for a specific device, 'Desktop \ COMPTA-DESK - 192.168.1.30'. The information is organized into sections: Operating System Edition (Microsoft Windows 10 Professionnel), System (Last Scanned Date, Processor, Installed Memory (RAM), System Type, Pen and Touch), Computer name, Domain, and Workgroup Settings (Computer Name, Domain, Assignment), and Emergency (Emergency).

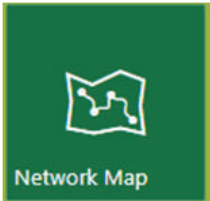
Section	Details
Operating System Edition	Microsoft Windows 10 Professionnel OS Product Key: VK7G-NPHTM-CST3M-BWPGT-2V8BT
System	Last Scanned Date: 12/17/2019 05:11 PM Processor: Intel(R) Core(TM)2 Quad CPU Q9500 @ 2.66GHz Installed Memory (RAM): 4 GB System Type: 64 bits Operating System, x64 Processor Pen and Touch: No Pen or Touch Input is available for this Display
Computer name, Domain, and Workgroup Settings	Computer Name: COMPTA-DESK Domain: PCIFRANCE.FR Assignment: [blank]
Emergency	Emergency: [blank]

Asset Administration

Centralize the administration of devices on your network



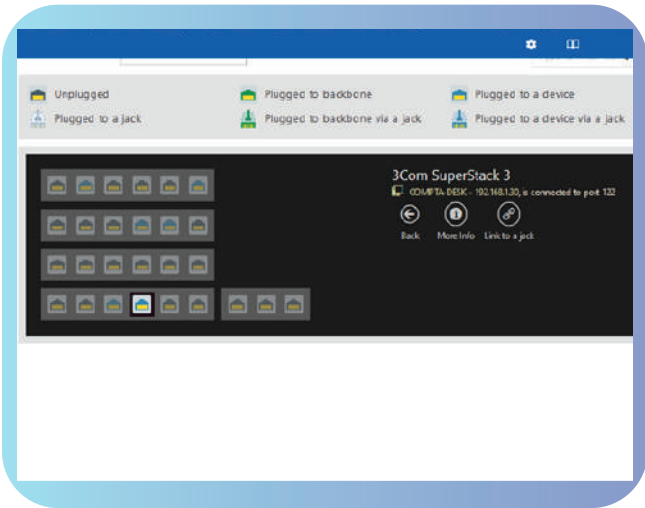
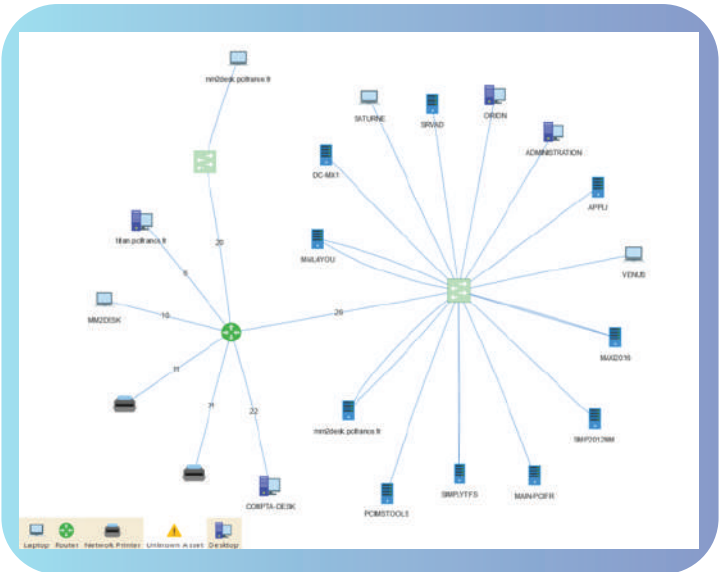
Package Distribution



Network mapping and block wiring

Network mapping and block wiring

With this module, you can view a graphical representation of the network and the connections between switches. For each switch, block wiring displays the ports being used, the IP devices connected and the network socket number to which each IP device is connected.



Package Distribution

Remotely install applications, patches and software updates to facilitate a consistent IT infrastructure which is easy to maintain.

Packages

Package Sessions

Package Distribution

Package Settings

Tickets Service Catalog Tasks Assets Reporting

History

1 of 1 Sessions

Package Distribution	Package name	SimplyBox	Started In	Completed On	Completed Count	Failed Count
Chrome Distribution	Chrome	SATURNE	12/17/2018 05:24 PM	12/17/2018 05:25 PM	0	2

Asset Administration

Centralize the administration of devices on your network



Active Directory link



Remote Access

Active Directory link



The SSO unique authentication system saves customers and agents from signing in to access the application

Automatic updates and user creation

Automatic workstation allocation to users via the inventory module.

Configuration and mapping of Active Directory Connector

LDAP Templates

Schedules

LDAP Template

Template Name

PCIFRANCE.FR

Default company

PCI

SimplyBox

SATURNE

Filter

(&(objectCategory=person)(company=PCI)(ob

Username

PCIFRANCE\administrateur

Path (DN)

LDAP://DC=PCIFRANCE,DC=FR

Test Connection

Get Schema

User Attribute	LDAP Attribute
Alternate email	wwwhomepage
Cell phone	mobile
Company	company
Email	mail
Extension	telephonenumber
Fax	facsimiletelephonenumber
First Name	givenname

List of Users to import

LDAP Templates

Schedules

Back

Show not imported users

<input checked="" type="checkbox"/>	Username	First Name	Last Name	Email	Alternate email	Company	Organization	Location
<input checked="" type="checkbox"/>	testsd	testsd	testsd	testsd@PCIFRANCE.FR		PCI	ORGATEST3	

The simplest
and most
efficient
A s s e t
management
software
on the **market**



Software available in SAAS or
in ON-PREMISE, the choice is yours!

..→ Hosting in secure DATA CENTERS
in France and Canada for SAAS mode

..→ Asset management at
a reduced price!



WWW.SIMPLYDESK.COM

Simplydesk was developed by PCI,
your Asset Management specialist for
19 years. PCI today has more than
700 customers.

PCI is a quality service, with avail-
able, responsive and competent
staff who will accompany you in
your project at each of its
stages ; Commercial Support,
Installation, Training, Opera-
tional Assistance, Mainte-
nance.



PCI FRANCE

Parc d'activité Gorge de Loup
Bâtiment 5
24, avenue Joannes Masset
69009 LYON - FRANCE
Phone : +33 (0)4 72 20 09 92

PCI CANADA

6600 rue Saint Urbain
Bureau 202
Montréal QUEBEC
H2S 3G8
Phone : +1 (514) 316-0978